

WARD APPARATUS

1250 SCHWEIZER ROAD PHONE (607) 796-0149
 HORSEHEADS, NY 14845 FAX (607) 739-7092

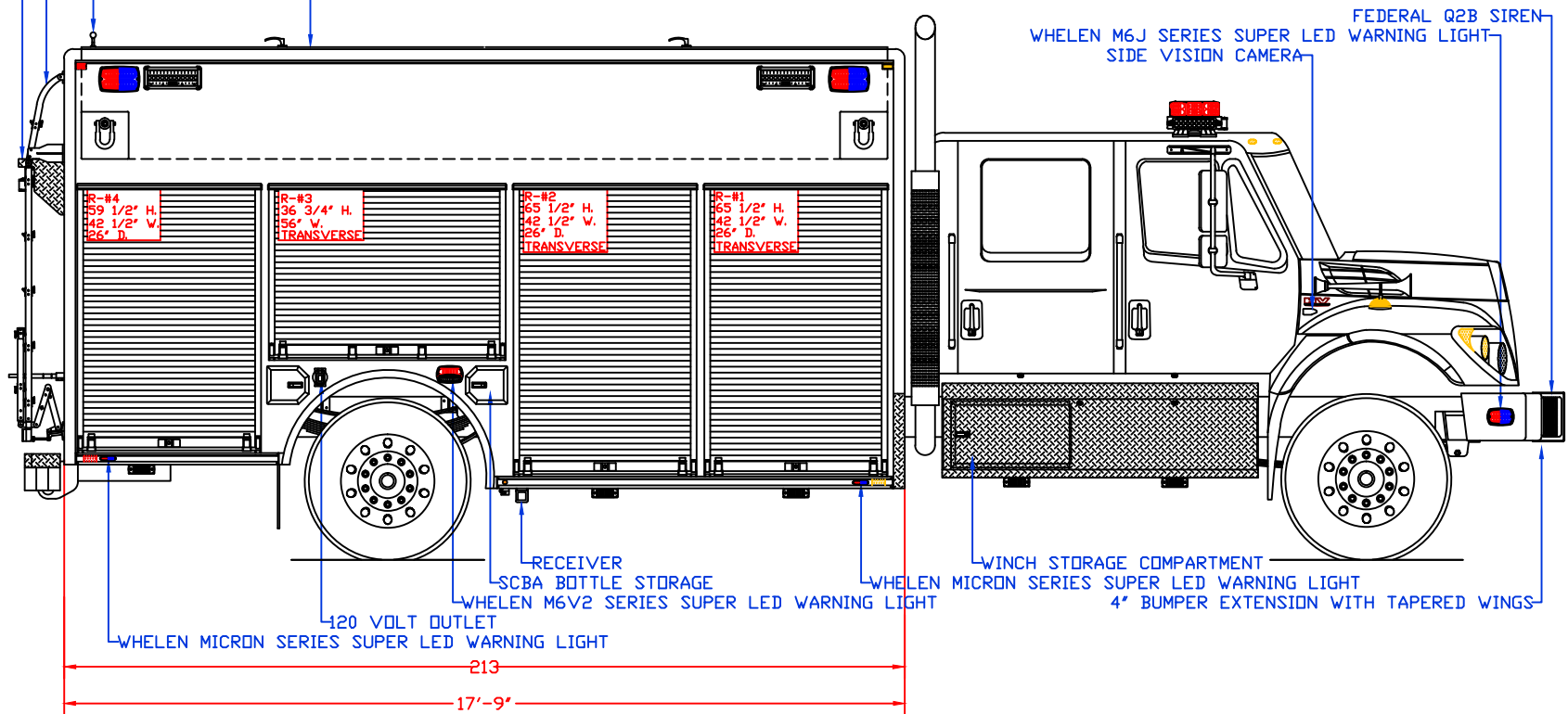
CUSTOMER APPROVED BY:

VEHICLE TYPE: HEAVY RESCUE	CHASSIS: INTERNATIONAL HV607 CREW CAB 4X2
VIEW: STREETSIDE	BODY MAT'L: ALUMINUM
SCALE: NTS	BODY LENGTH: 213"
DRAWN BY: NRW	APPROVED BY:
DATE: 2/11/2021	BODY STYLE:
DWG NO.: REPUBLICFD	REVISION:

CITY OF REPUBLIC FIRE DEPARTMENT

NOTE: ALL DIMENSIONS ARE APPROXIMATE

STEP TO ACCESS ROOF COMPARTMENTS
 ZICO QUICK-LADDER TO ACCESS ROOF COMPARTMENTS
 GRAB HANDLE TO ACCESS ROOF COMPARTMENTS
 ROOF COMPARTMENTS 25 1/2" DEEP



WARD APPARATUS

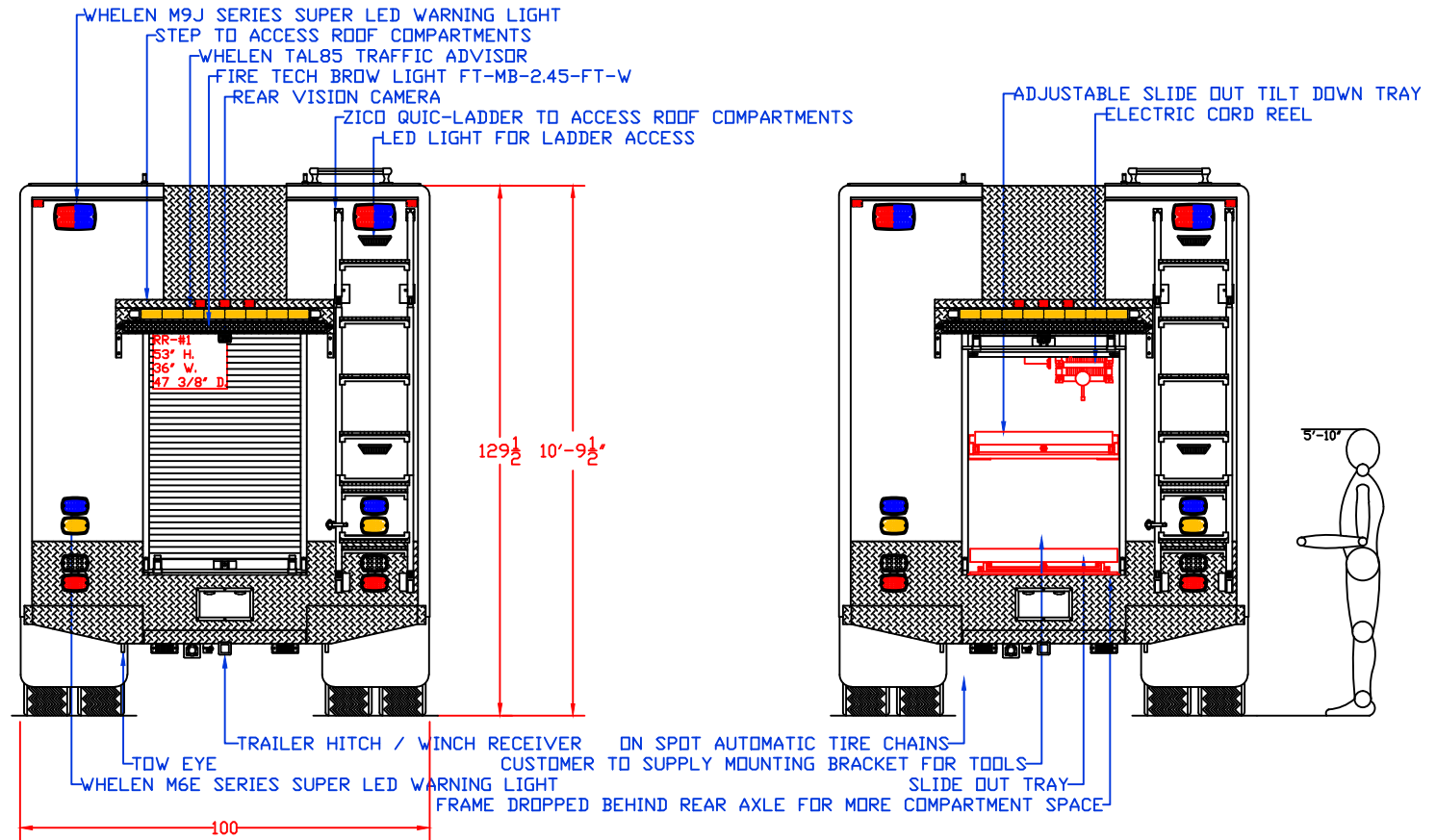
1250 SCHWEIZER ROAD PHONE (607) 796-0149
 HORSEHEADS, NY 14845 FAX (607) 739-7092

CUSTOMER APPROVED BY:

VEHICLE TYPE: HEAVY RESCUE	CHASSIS: INTERNATIONAL HV607 CREW CAB 4X2
VIEW: CURBSIDE	BODY MAT'L: ALUMINUM
SCALE: NTS	BODY LENGTH: 213"
DRAWN BY: NRW	APPROVED BY:
DATE: 2/11/2021	BODY STYLE:
DWG NO.: REPUBLICFD	REVISION:

CITY OF REPUBLIC FIRE DEPARTMENT

NOTE: ALL DIMENSIONS ARE APPROXIMATE



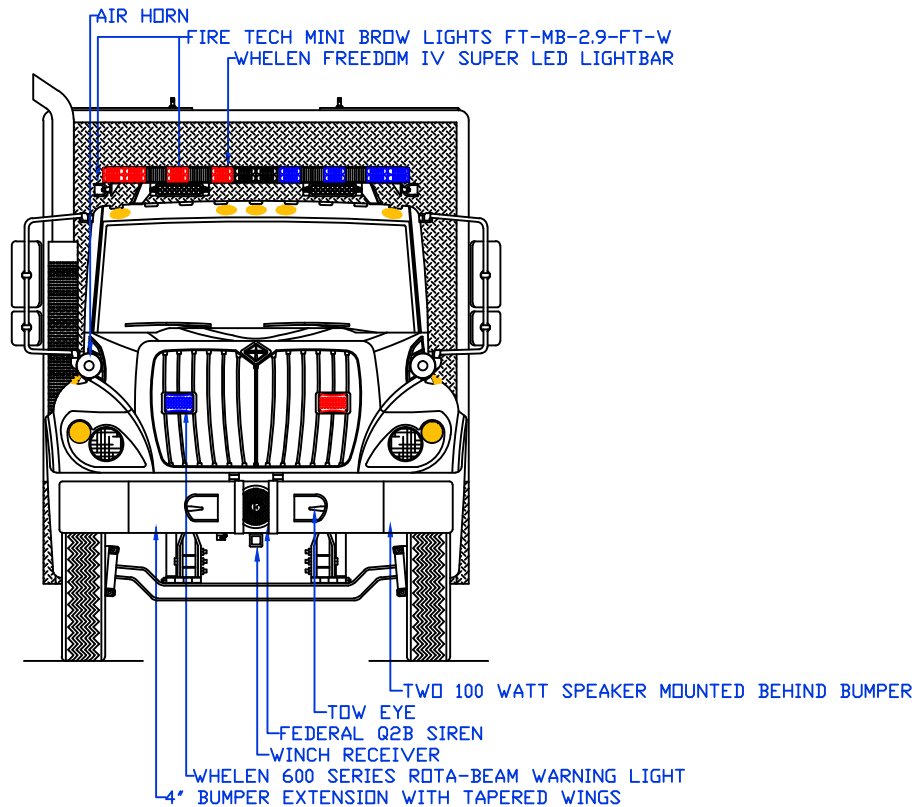
WARD APPARATUS

1250 SCHWEIZER ROAD PHONE (607) 796-0149
 HORSEHEADS, NY 14845 FAX (607) 739-7092

CITY OF REPUBLIC FIRE DEPARTMENT

CUSTOMER APPROVED BY:	
VEHICLE TYPE: HEAVY RESCUE	CHASSIS: INTERNATIONAL HV607 CREW CAB 4X2
VIEW: REAR & REAR COMPARTMENT LAYOUT	BODY MAT'L: ALUMINUM
SCALE: NTS	BODY LENGTH: 213"
DRAWN BY: NRW	APPROVED BY:
DATE: 2/11/2021	BODY STYLE:
DWG NO.: REPUBLICFD	REVISION:

NOTE: ALL DIMENSIONS ARE APPROXIMATE



WARD APPARATUS

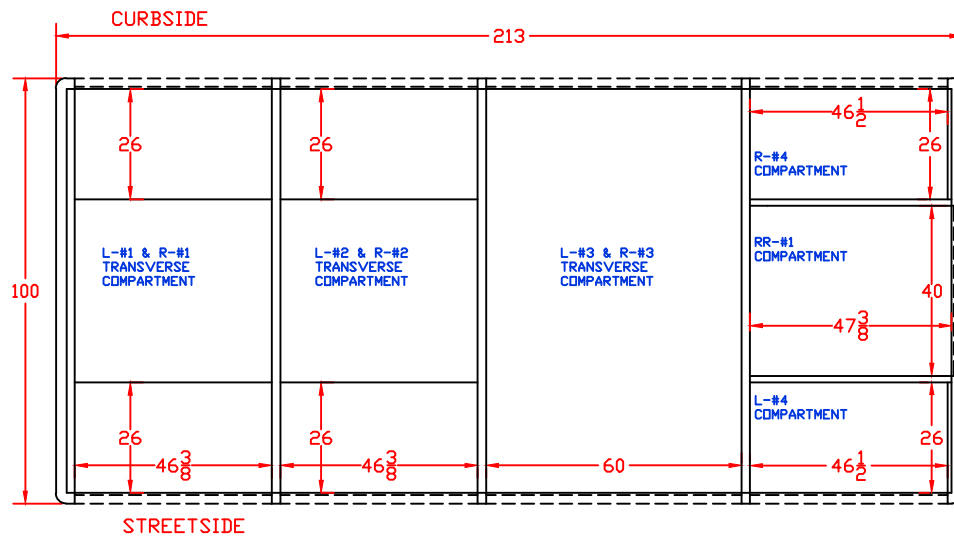
1250 SCHWEIZER ROAD PHONE (607) 796-0149
 HORSEHEADS, NY 14845 FAX (607) 739-7092

CITY OF REPUBLIC FIRE DEPARTMENT

CUSTOMER APPROVED BY:

VEHICLE TYPE: HEAVY RESCUE	CHASSIS: INTERNATIONAL HV607 CREW CAB 4X2
VIEW: FRONT	BODY MAT'L: ALUMINUM
SCALE: NTS	BODY LENGTH: 213"
DRAWN BY: NRW	APPROVED BY:
DATE: 2/11/2021	BODY STYLE:
DWG NO.: REPUBLICFD	REVISION:

NOTE: ALL DIMENSIONS ARE APPROXIMATE



WARD APPARATUS

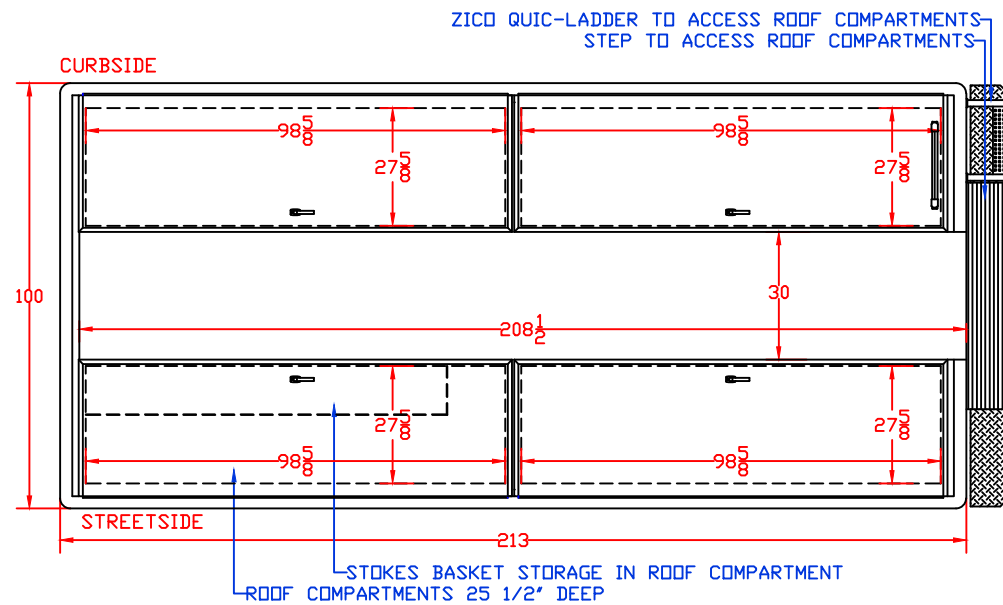
1250 SCHWEIZER ROAD PHONE (607) 796-0149
 HORSEHEADS, NY 14845 FAX (607) 739-7092

CITY OF REPUBLIC FIRE DEPARTMENT

CUSTOMER APPROVED BY:

VEHICLE TYPE: HEAVY RESCUE	CHASSIS: INTERNATIONAL HV607 CREW CAB 4X2
VIEW: TOP	BODY MAT'L: ALUMINUM
SCALE: NTS	BODY LENGTH: 213"
DRAWN BY: NRW	APPROVED BY:
DATE: 2/11/2021	BODY STYLE:
DWG NO.: REPUBLICFD	REVISION:

NOTE: ALL DIMENSIONS ARE APPROXIMATE



WARD APPARATUS

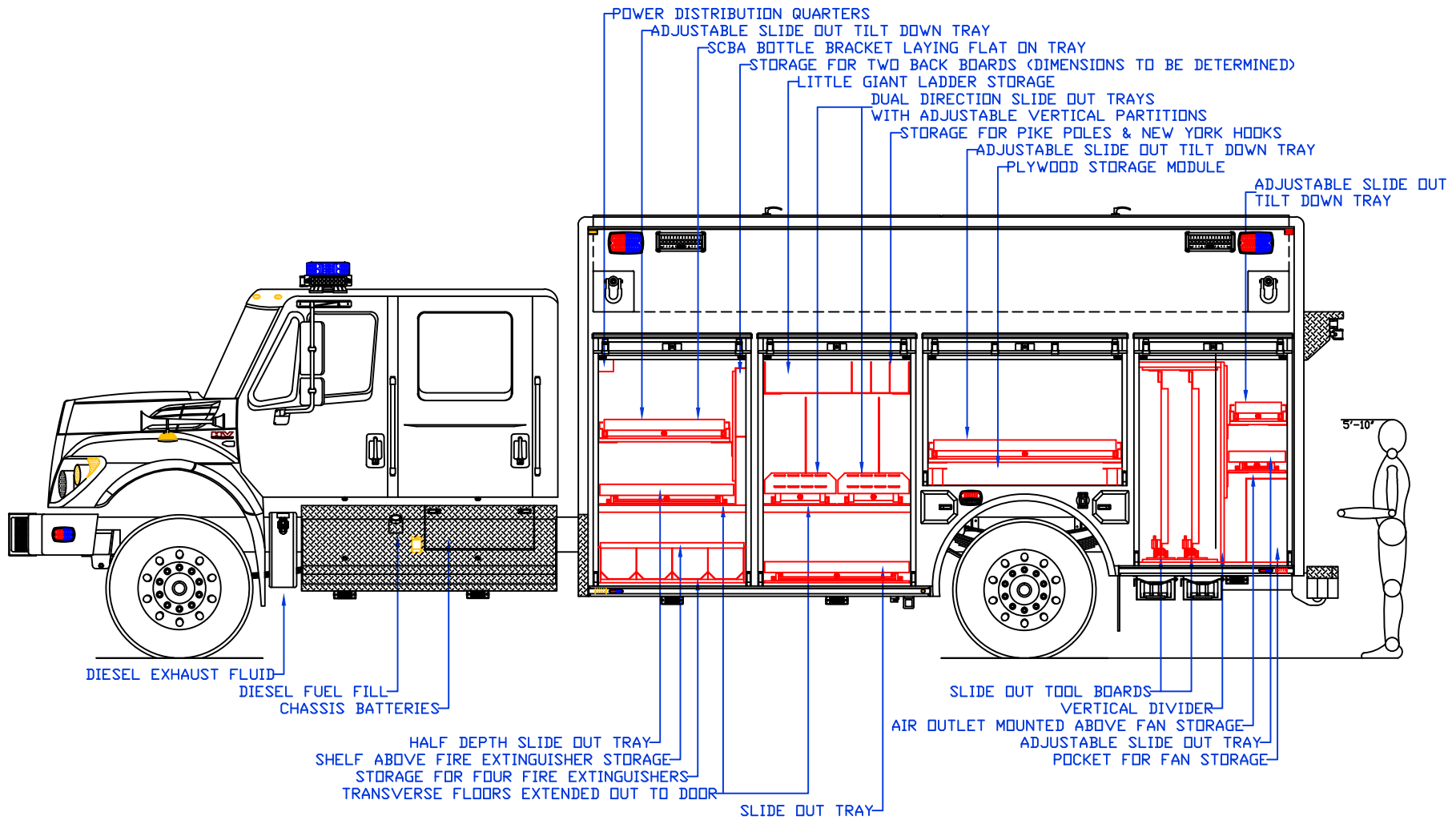
1250 SCHWEIZER ROAD PHONE (607) 796-0149
HORSEHEADS, NY 14845 FAX (607) 739-7092

CITY OF REPUBLIC FIRE DEPARTMENT

CUSTOMER APPROVED BY:

VEHICLE TYPE: HEAVY RESCUE	CHASSIS: INTERNATIONAL HV607 CREW CAB 4X2
VIEW: ROOF	BODY MAT'L: ALUMINUM
SCALE: NTS	BODY LENGTH: 213"
DRAWN BY: NRW	APPROVED BY:
DATE: 2/11/2021	BODY STYLE:
DWG NO.: REPUBLICFD	REVISION:

NOTE: ALL DIMENSIONS ARE APPROXIMATE



WARD APPARATUS

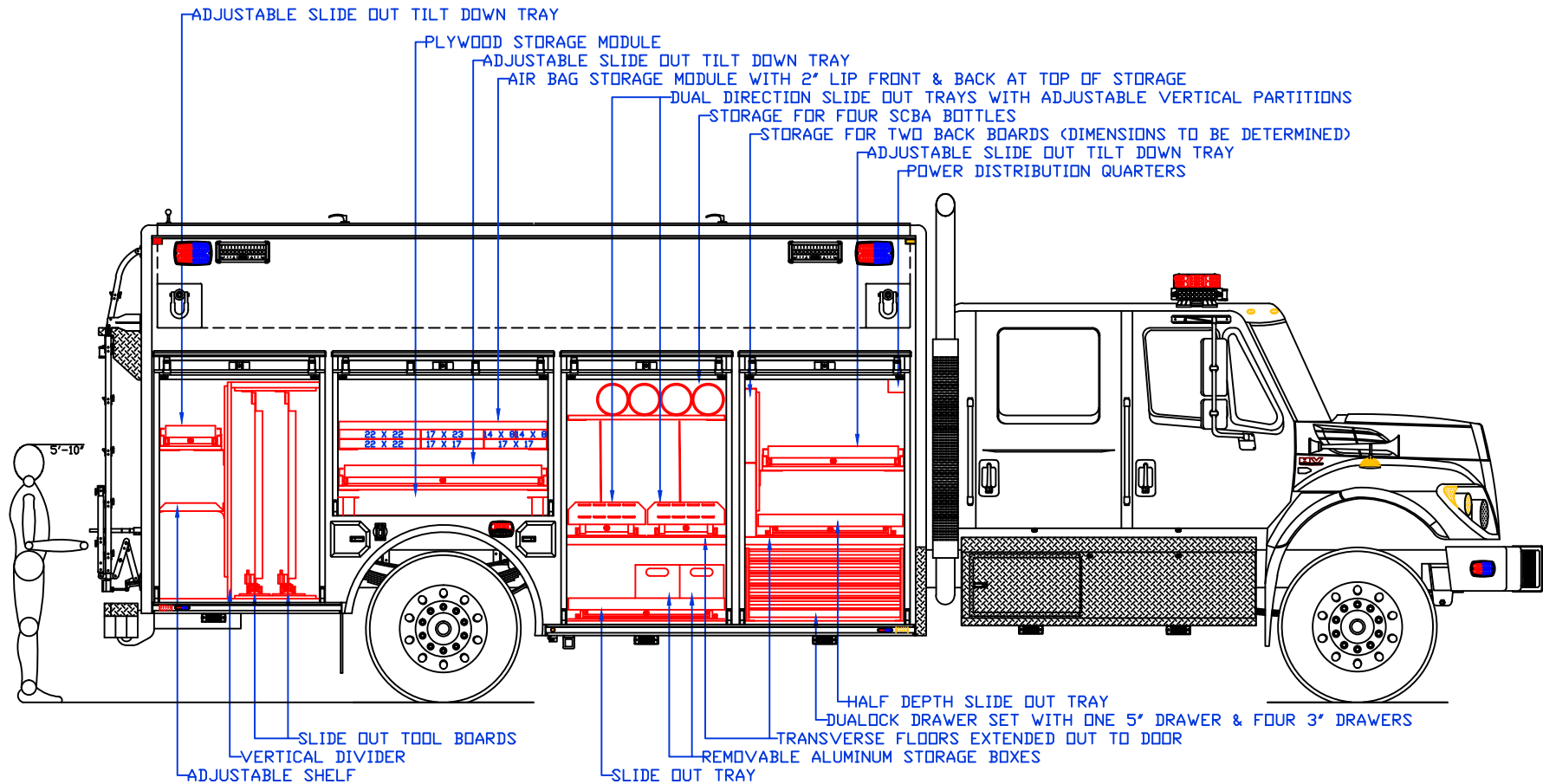
1250 SCHWEIZER ROAD PHONE (607) 796-0149
 HORSEHEADS, NY 14845 FAX (607) 739-7092

CUSTOMER APPROVED BY:

VEHICLE TYPE: HEAVY RESCUE	CHASSIS: INTERNATIONAL HV607 CREW CAB 4X2
VIEW: STREETSIDE COMPARTMENT LAYOUT	BODY MAT'L: ALUMINUM
SCALE: NTS	BODY LENGTH: 213"
DRAWN BY: NRW	APPROVED BY:
DATE: 2/11/2021	BODY STYLE:
DWG NO.: REPUBLICFD	REVISION:

CITY OF REPUBLIC FIRE DEPARTMENT

NOTE: ALL DIMENSIONS ARE APPROXIMATE



WARD APPARATUS

1250 SCHWEIZER ROAD PHONE (607) 796-0149
 HORSEHEADS, NY 14845 FAX (607) 739-7092

CITY OF REPUBLIC FIRE DEPARTMENT

CUSTOMER APPROVED BY:	
VEHICLE TYPE: HEAVY RESCUE	CHASSIS: INTERNATIONAL HV607 CREW CAB 4X2
VIEW: CURBSIDE COMPARTMENT LAYOUT	BODY MAT'L: ALUMINUM
SCALE: NTS	BODY LENGTH: 213"
DRAWN BY: NRW	APPROVED BY:
DATE: 2/11/2021	BODY STYLE:
DWG NO.: REPUBLICFD	REVISION:

NOTE: ALL DIMENSIONS ARE APPROXIMATE