

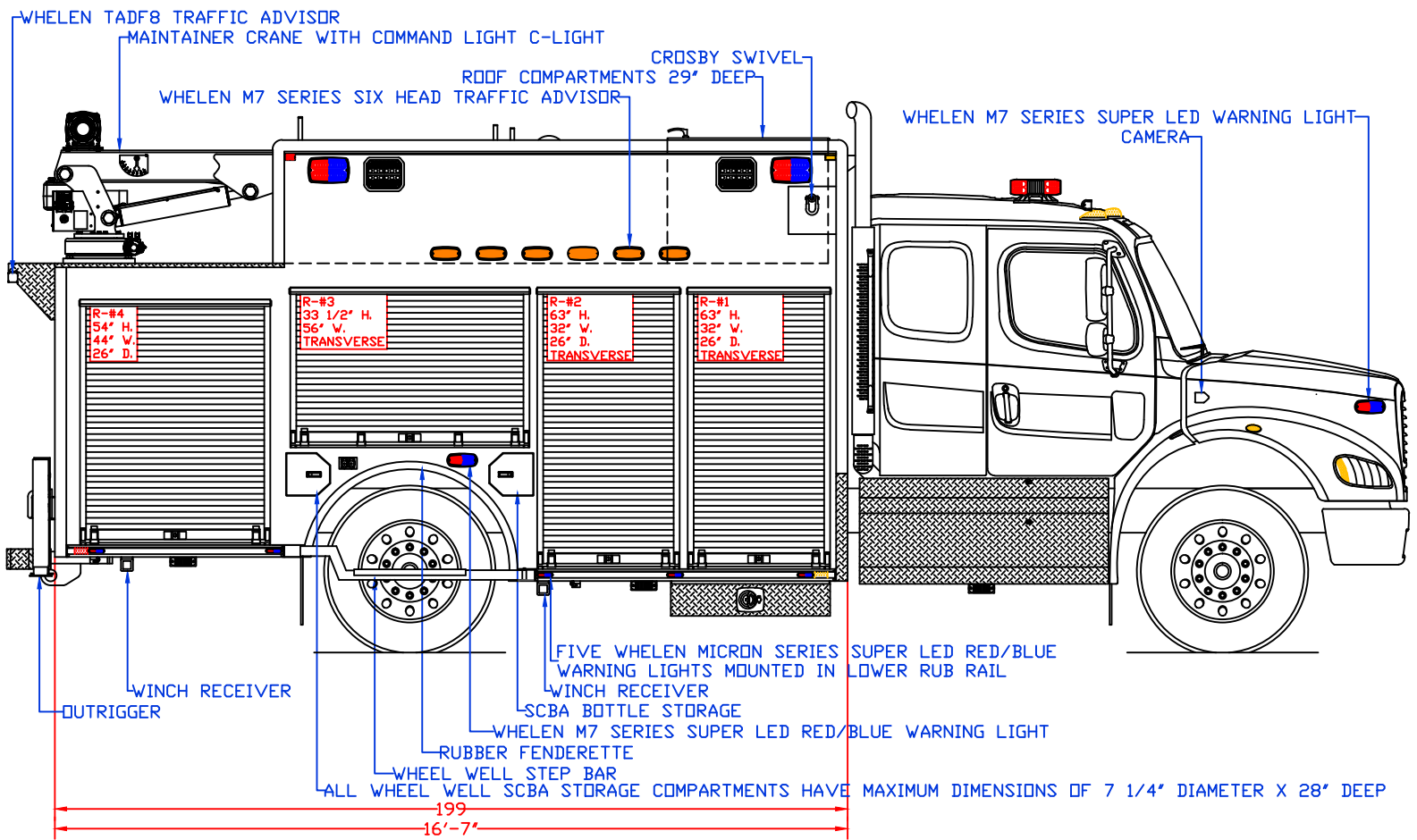
**WARD APPARATUS**

1250 SCHWEIZER ROAD    PHONE (607) 796-0149  
 HORSEHEADS, NY 14845    FAX (607) 739-7092

PARSIPPANY RESCUE & RECOVERY

<b>CUSTOMER APPROVED BY:</b>	
VEHICLE TYPE: <b>HEAVY RESCUE</b>	CHASSIS: <b>FREIGHTLINER M2-112 EXTENDED CAB 4X2</b>
VIEW: <b>STREETSIDE</b>	BODY MAT'L: <b>ALUMINUM</b>
SCALE: <b>NTS</b>	BODY LENGTH: <b>199"</b>
DRAWN BY: <b>NRW</b>	APPROVED BY:
DATE: <b>3/9/2022</b>	BODY STYLE:
DWG NO.: <b>PARSIPPANYRESCUE</b>	REVISION:

*NOTE: ALL DIMENSIONS ARE APPROXIMATE*



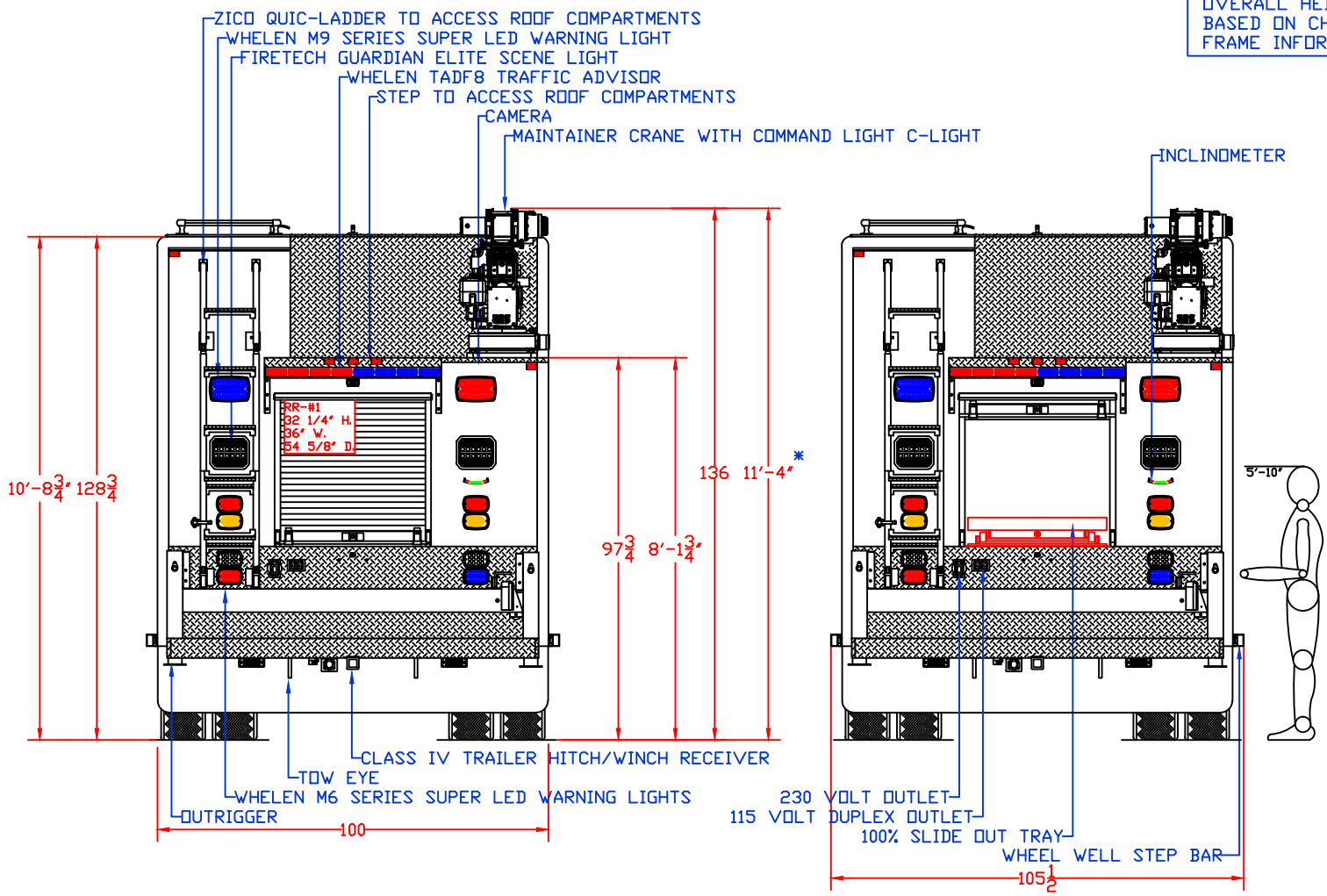
**WARD APPARATUS**  
 1250 SCHWEIZER ROAD    PHONE (607) 796-0149  
 HORSEHEADS, NY 14845    FAX (607) 739-7092

<b>CUSTOMER APPROVED BY:</b>	
VEHICLE TYPE: <b>HEAVY RESCUE</b>	CHASSIS: <b>FREIGHTLINER M2-112 EXTENDED CAB 4X2</b>
VIEW: <b>CURBSIDE</b>	BODY MAT'L: <b>ALUMINUM</b>
SCALE: <b>NTS</b>	BODY LENGTH: <b>199"</b>
DRAWN BY: <b>NRW</b>	APPROVED BY:
DATE: <b>3/9/2022</b>	BODY STYLE:
DWG NO.: <b>PARSIPPANYRESCUE</b>	REVISION:

PARSIPPANY RESCUE & RECOVERY

*NOTE: ALL DIMENSIONS ARE APPROXIMATE*

\*OVERALL HEIGHT IS A ESTIMATE BASED ON CHASSIS BODY BUILDER FRAME INFORMATION.

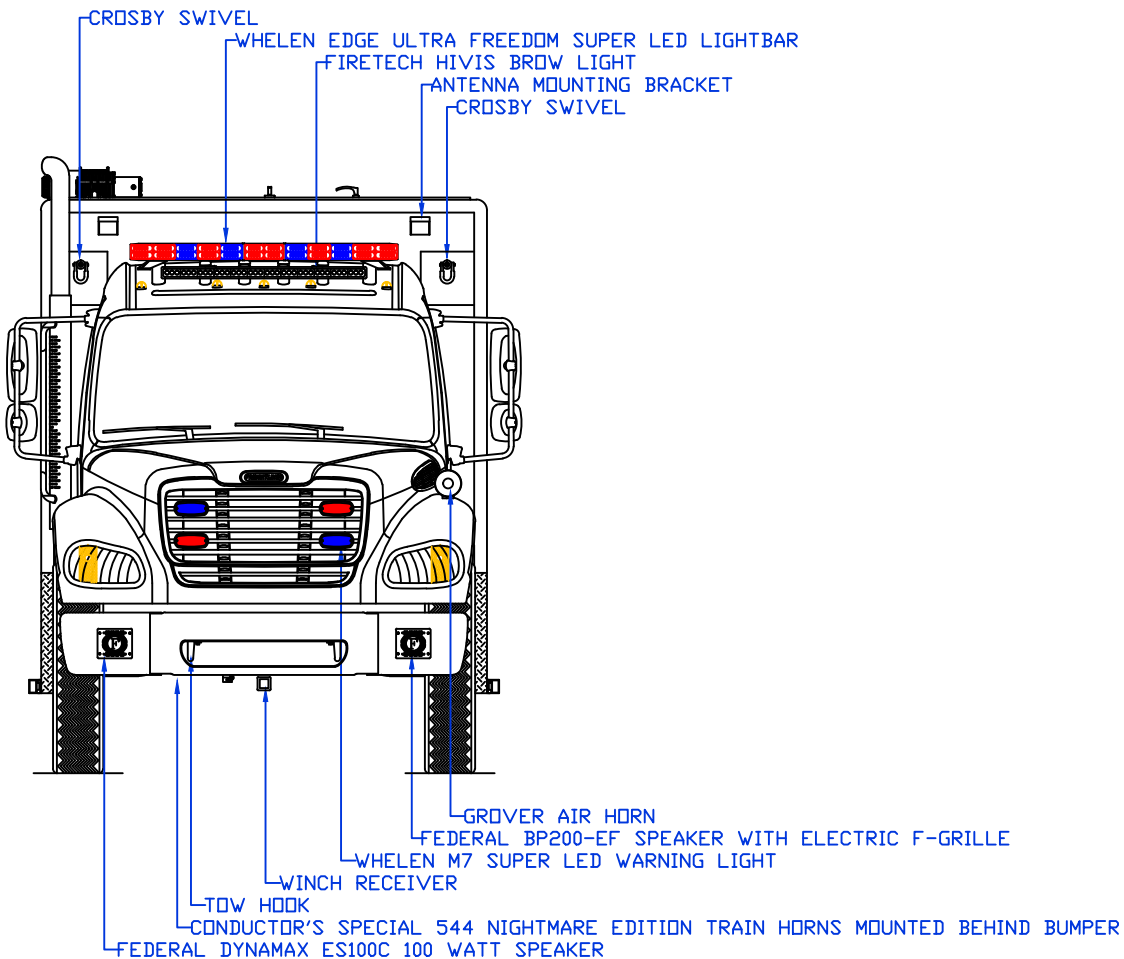


**WARD APPARATUS**  
 1250 SCHWEIZER ROAD PHONE (607) 796-0149  
 HORSEHEADS, NY 14845 FAX (607) 739-7092

<b>CUSTOMER APPROVED BY:</b>	
VEHICLE TYPE: HEAVY RESCUE	CHASSIS: FREIGHTLINER M2-112 EXTENDED CAB 4X2
VIEW: REAR & REAR COMPARTMENT LAYOUT	BODY MAT'L: ALUMINUM
SCALE: NTS	BODY LENGTH: 199"
DRAWN BY: NRW	APPROVED BY:
DATE: 3/9/2022	BODY STYLE:
DWG NO.: PARSIPPANYRESCUE	REVISION:

PARSIPPANY RESCUE & RECOVERY

NOTE: ALL DIMENSIONS ARE APPROXIMATE



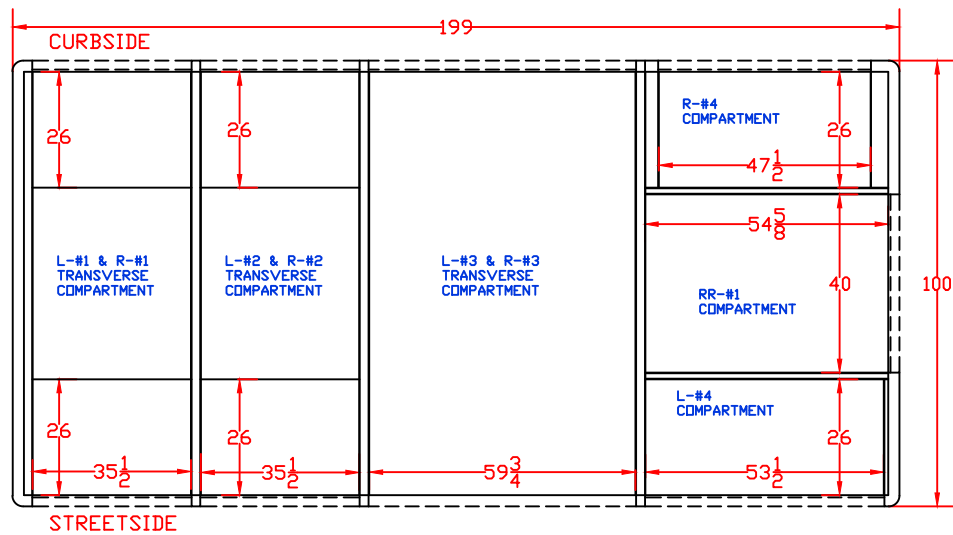
**WARD APPARATUS**

1250 SCHWEIZER ROAD PHONE (607) 796-0149  
 HORSEHEADS, NY 14845 FAX (607) 739-7092

PARSIPPANY RESCUE & RECOVERY

<b>CUSTOMER APPROVED BY:</b>	
VEHICLE TYPE: <b>HEAVY RESCUE</b>	CHASSIS: <b>FREIGHTLINER M2-112 EXTENDED CAB 4X2</b>
VIEW: <b>FRONT</b>	BODY MAT'L: <b>ALUMINUM</b>
SCALE: <b>NTS</b>	BODY LENGTH: <b>199"</b>
DRAWN BY: <b>NRW</b>	APPROVED BY:
DATE: <b>3/9/2022</b>	BODY STYLE:
DWG NO.: <b>PARSIPPANYRESCUE</b>	REVISION:

*NOTE: ALL DIMENSIONS ARE APPROXIMATE*



**WARD APPARATUS**

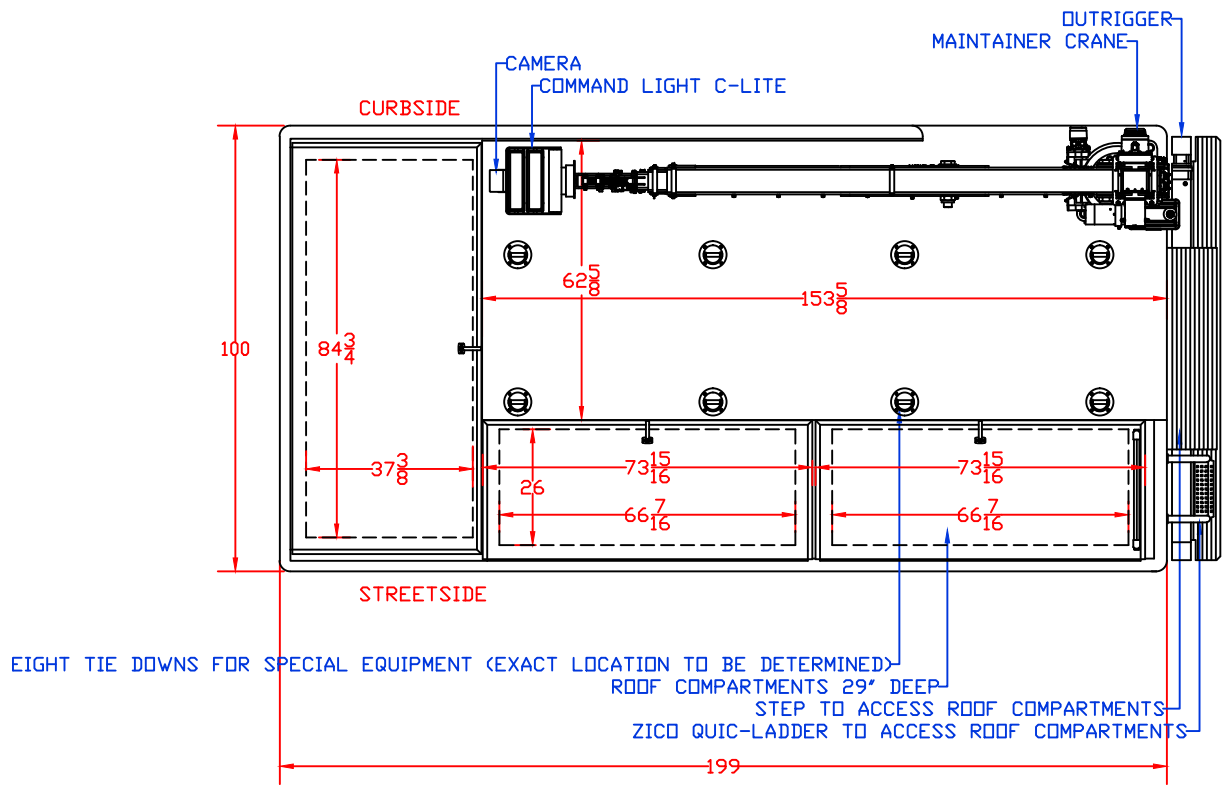
1250 SCHWEIZER ROAD    PHONE (607) 796-0149  
 HORSEHEADS, NY 14845    FAX (607) 739-7092

PARSIPPANY RESCUE & RECOVERY

**CUSTOMER APPROVED BY:**

VEHICLE TYPE: <b>HEAVY RESCUE</b>	CHASSIS: <b>FREIGHTLINER M2-112 EXTENDED CAB 4X2</b>
VIEW: <b>TOP</b>	BODY MAT'L: <b>ALUMINUM</b>
SCALE: <b>NTS</b>	BODY LENGTH: <b>199"</b>
DRAWN BY: <b>NRW</b>	APPROVED BY:
DATE: <b>3/9/2022</b>	BODY STYLE:
DWG NO.: <b>PARSIPPANYRESCUE</b>	REVISION:

*NOTE: ALL DIMENSIONS ARE APPROXIMATE*

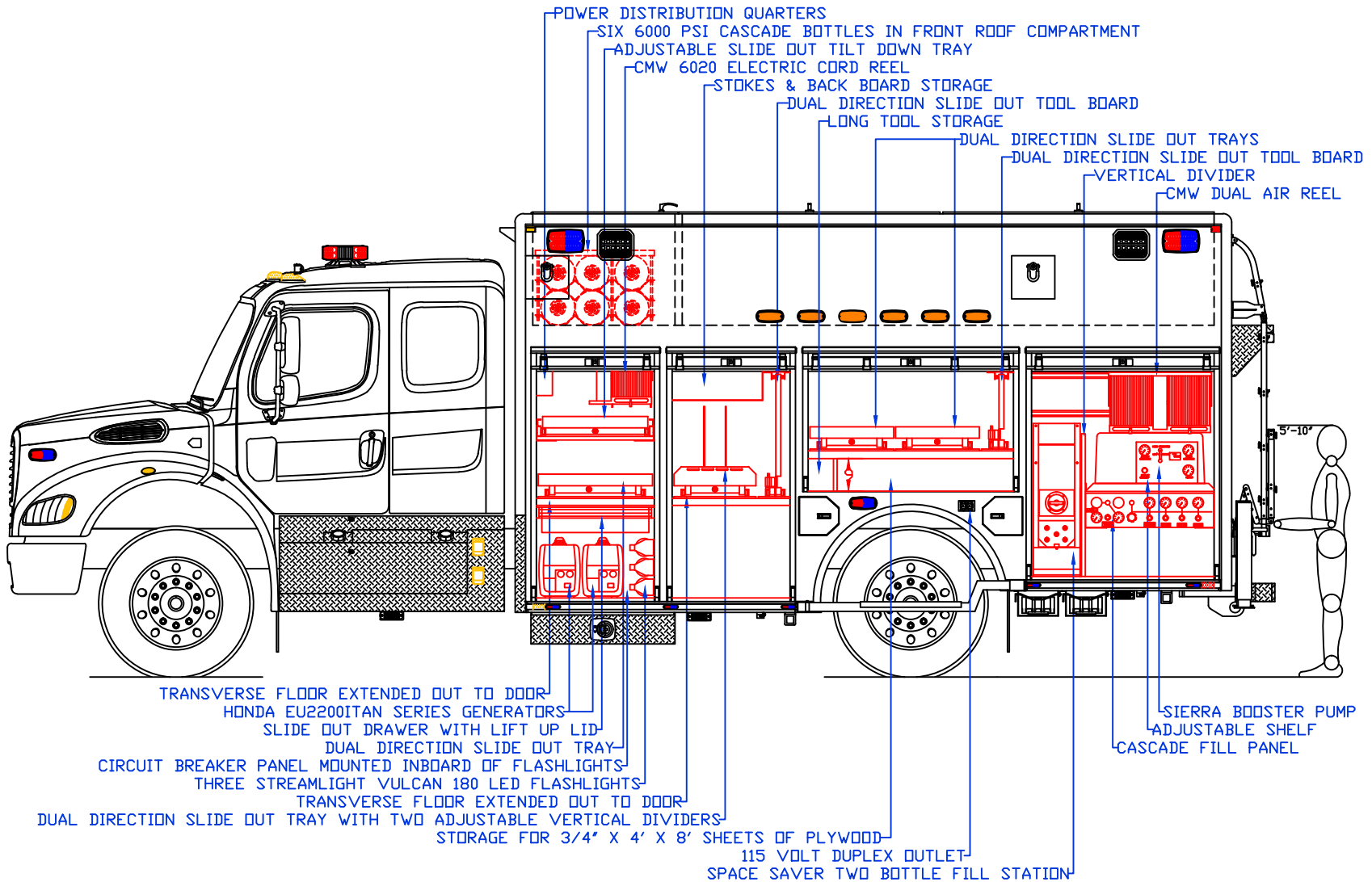


**WARD APPARATUS**  
 1250 SCHWEIZER ROAD    PHONE (607) 796-0149  
 HORSEHEADS, NY 14845    FAX (607) 739-7092

<b>CUSTOMER APPROVED BY:</b>	
VEHICLE TYPE: <b>HEAVY RESCUE</b>	CHASSIS: <b>FREIGHTLINER M2-112 EXTENDED CAB 4X2</b>
VIEW: <b>ROOF</b>	BODY MAT'L: <b>ALUMINUM</b>
SCALE: <b>NTS</b>	BODY LENGTH: <b>199"</b>
DRAWN BY: <b>NRW</b>	APPROVED BY:
DATE: <b>3/9/2022</b>	BODY STYLE:
DWG NO.: <b>PARSIPPANYRESCUE</b>	REVISION:

PARSIPPANY RESCUE & RECOVERY

*NOTE: ALL DIMENSIONS ARE APPROXIMATE*



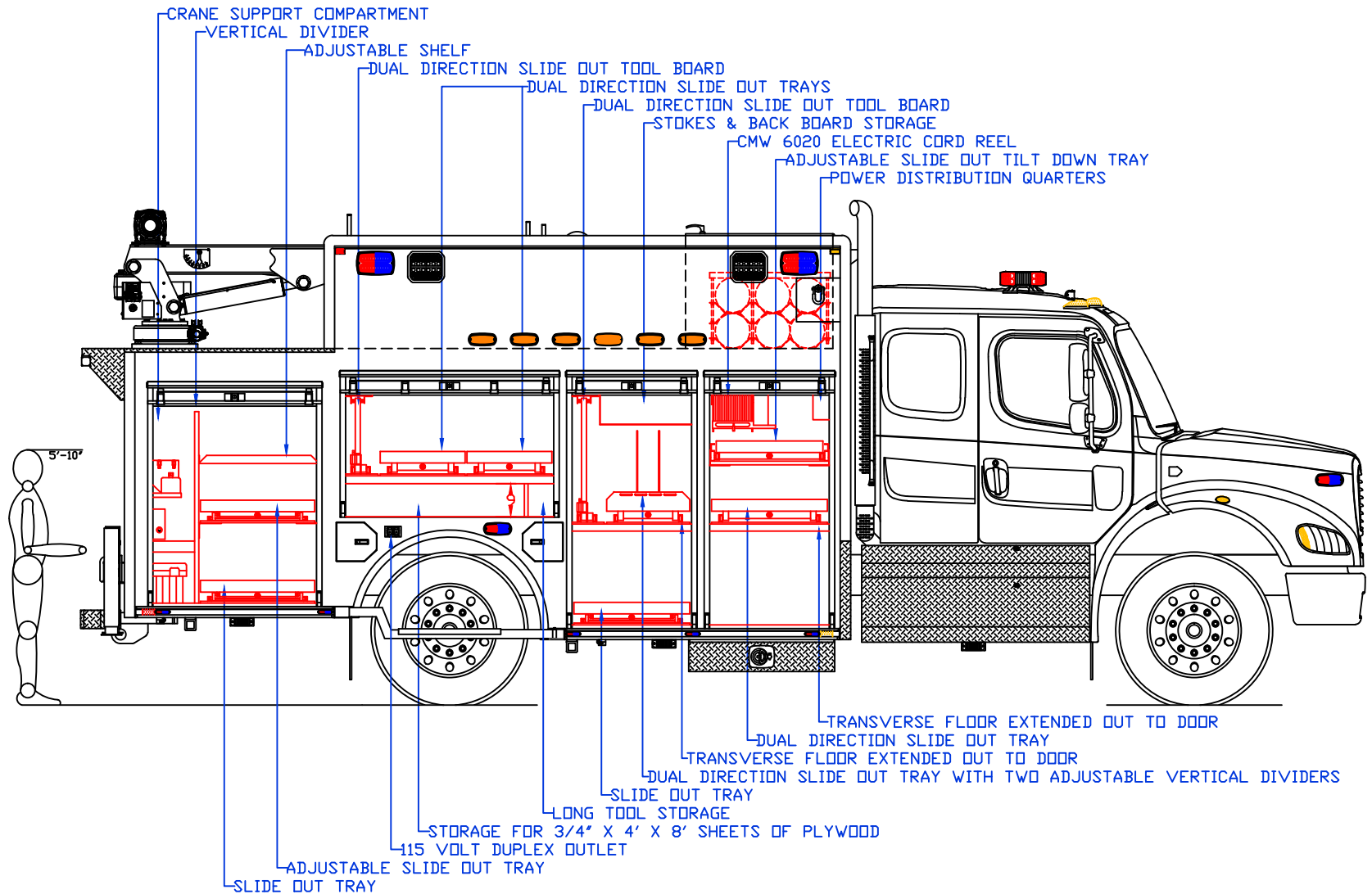
**WARD APPARATUS**

1250 SCHWEIZER ROAD PHONE (607) 796-0149  
 HORSEHEADS, NY 14845 FAX (607) 739-7092

**CUSTOMER APPROVED BY:**

VEHICLE TYPE: HEAVY RESCUE	CHASSIS: FREIGHTLINER M2-112 EXTENDED CAB 4X2
VIEW: STREETSIDE COMPARTMENT LAYOUT	BODY MAT'L: ALUMINUM
SCALE: NTS	BODY LENGTH: 199"
DRAWN BY: NRW	APPROVED BY:
DATE: 3/9/2022	BODY STYLE:
DWG NO.: PARSIPPANYRESCUE	REVISION:

NOTE: ALL DIMENSIONS ARE APPROXIMATE



**WARD APPARATUS**

1250 SCHWEIZER ROAD PHONE (607) 796-0149  
 HORSEHEADS, NY 14845 FAX (607) 739-7092

PARSIPPANY RESCUE & RECOVERY

<b>CUSTOMER APPROVED BY:</b>	
VEHICLE TYPE: <b>HEAVY RESCUE</b>	CHASSIS: <b>FREIGHTLINER M2-112 EXTENDED CAB 4X2</b>
VIEW: <b>CURBSIDE COMPARTMENT LAYOUT</b>	BODY MAT'L: <b>ALUMINUM</b>
SCALE: <b>NTS</b>	BODY LENGTH: <b>199"</b>
DRAWN BY: <b>NRW</b>	APPROVED BY:
DATE: <b>3/9/2022</b>	BODY STYLE:
DWG NO.: <b>PARSIPPANYRESCUE</b>	REVISION:

*NOTE: ALL DIMENSIONS ARE APPROXIMATE*